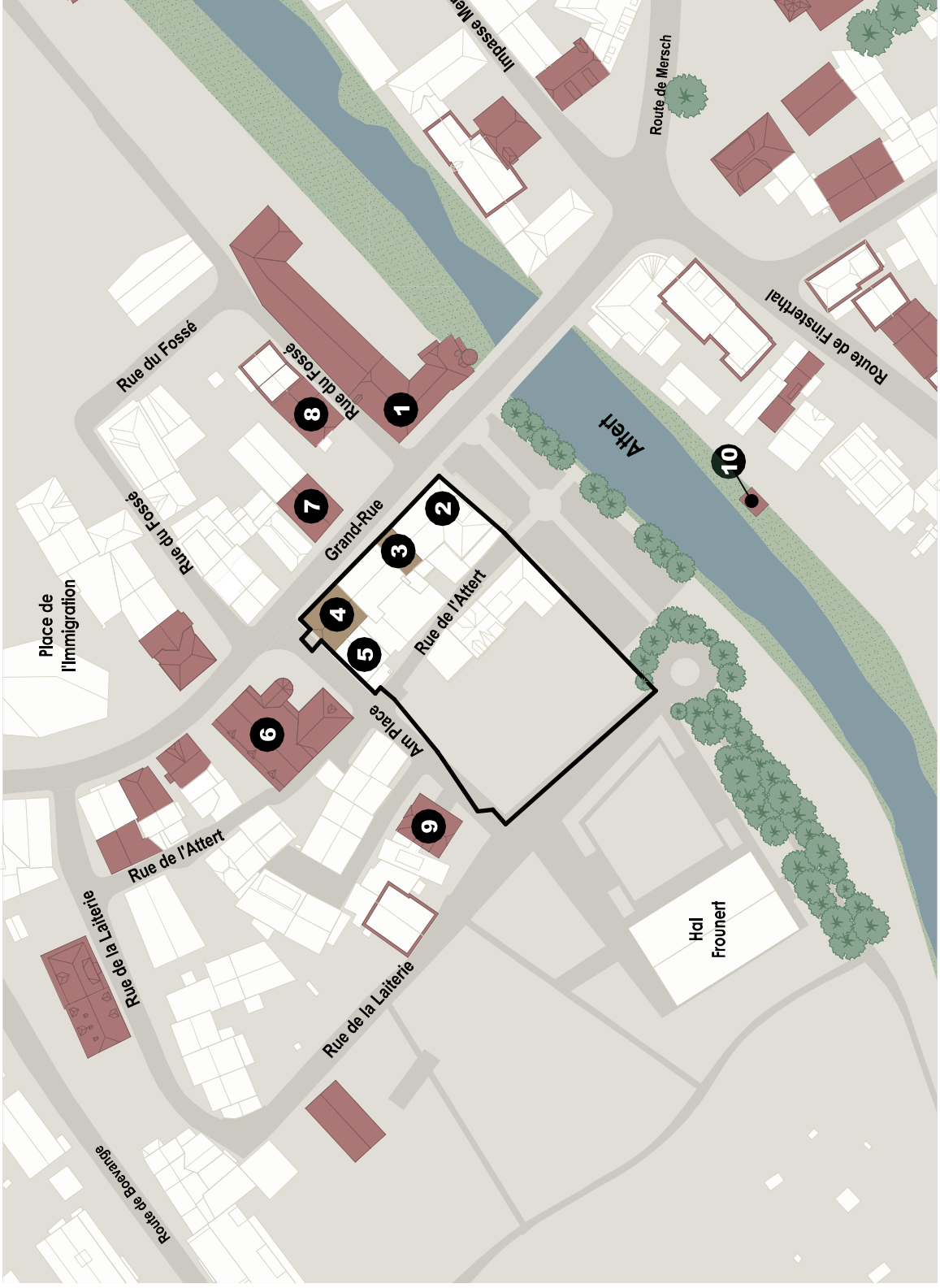


# ÉLÉMENTS IDENTITAIRES



- Construction à préserver (PAG)
- Gabarit d'une construction à préserver
- Élément identitaire à préserver (S.Dir.)
- Biotope protégé
- Arbre protégé
- Périmètre du PAP



1:1000

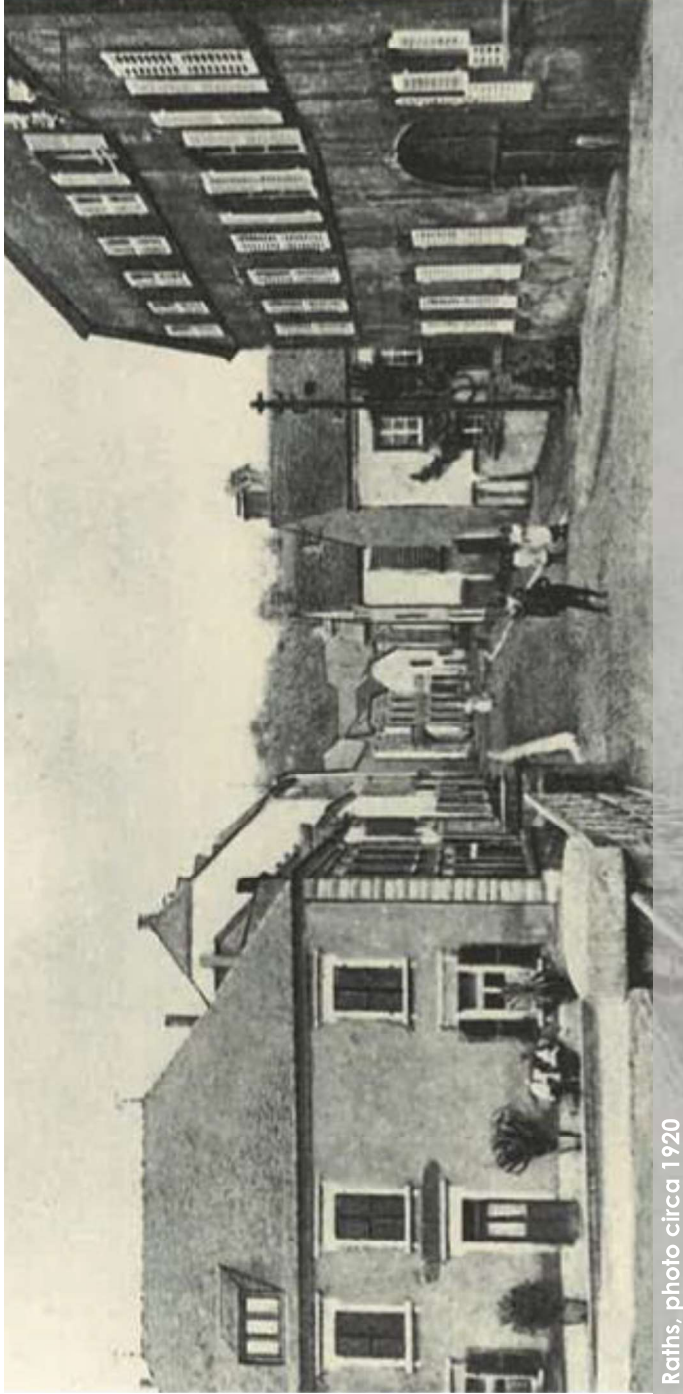
# PHOTOS HISTORIQUES GRAND-RUE



Grand-Rue, photo circa 1910



Grand-Rue, photo circa 1975



Rath's, photo circa 1920



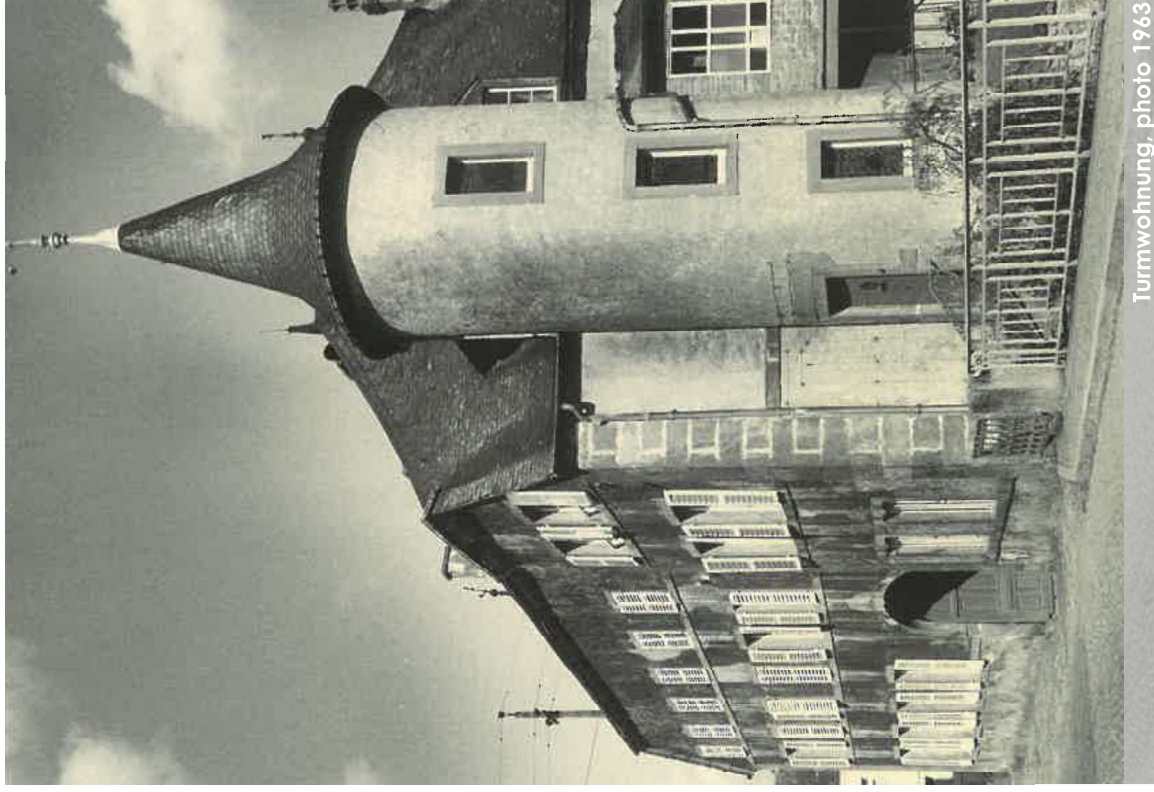
# PHOTOS HISTORIQUES SINNESCHHAUS



Goedesch/Meerschens/Sinnesch, construction circa 1779



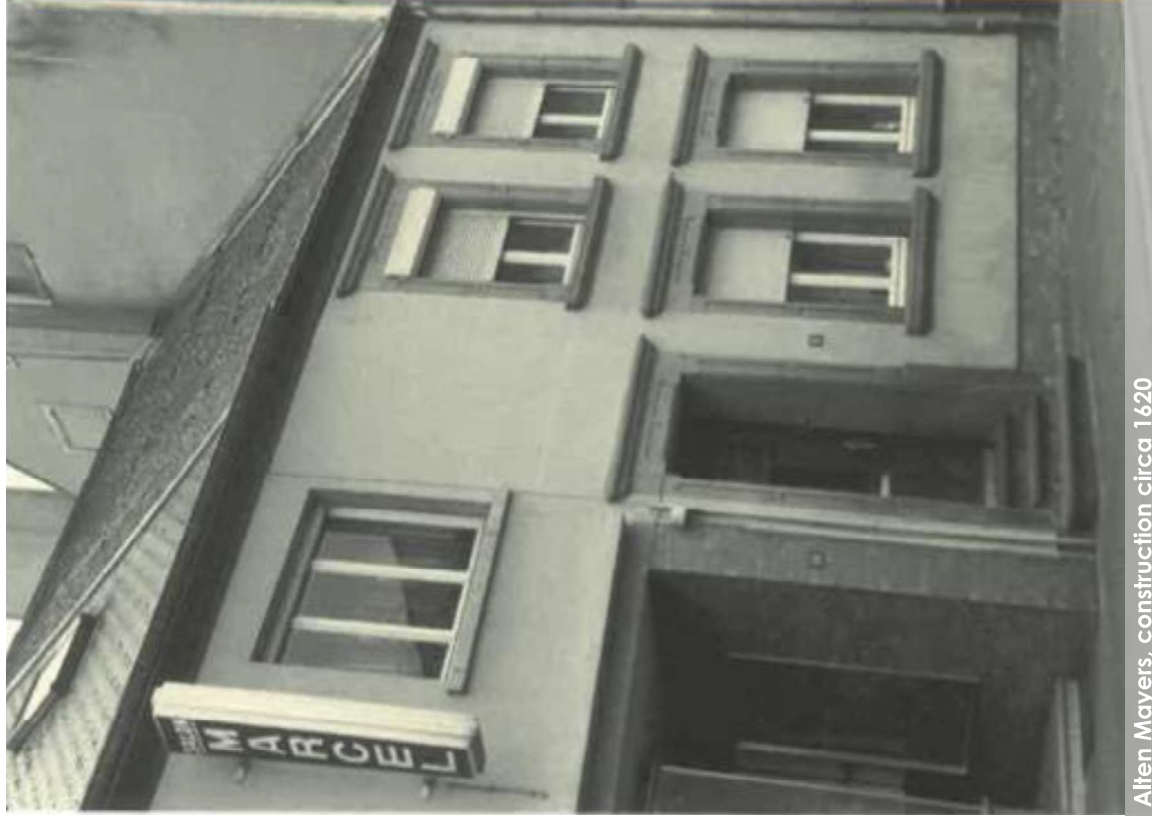
Après restauration, 1978



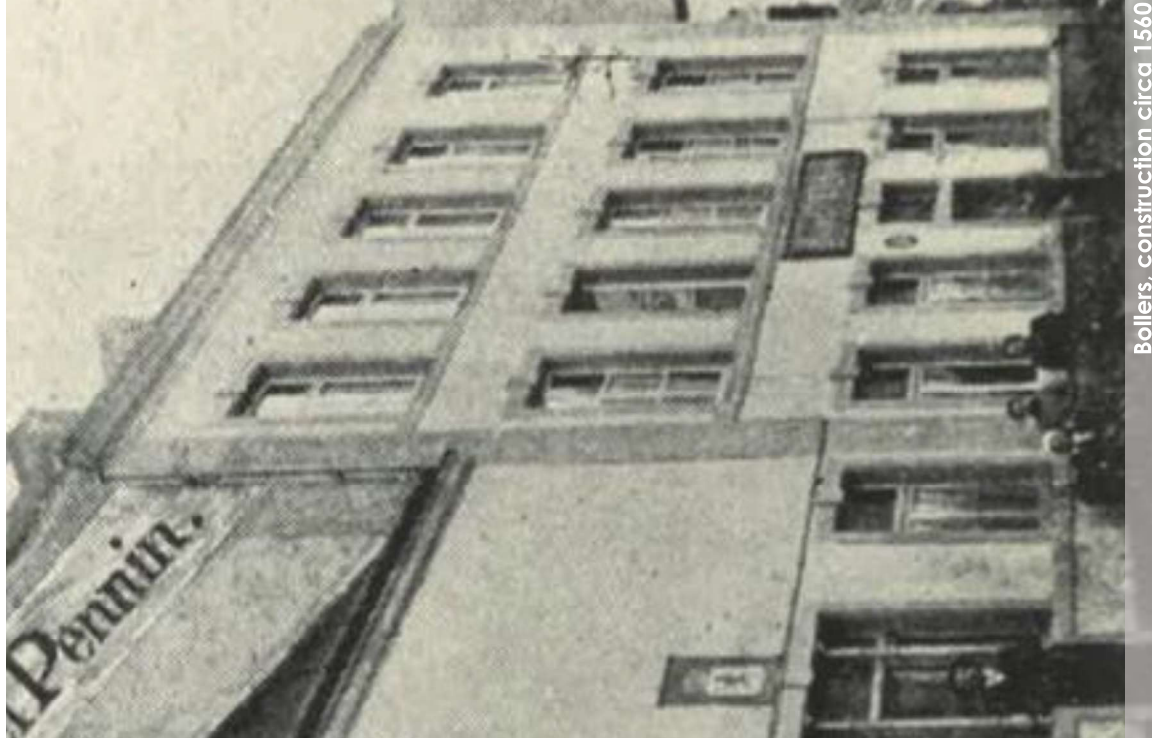
Turmwohnung, photo 1963

Source :  
Victor Kalmes, Bissen seit eh und je - Band 1

**PHOTOS HISTORIQUES  
ALTEN MAYERS, BOLLERS**



**Alten Mayers, construction circa 1620**

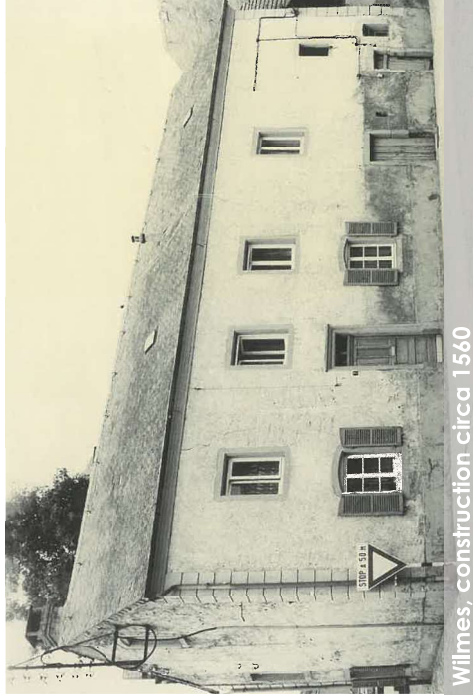


**Bollers, construction circa 1560**

Source :  
Victor Kalmes, Bissen seit eh und je - Band 1



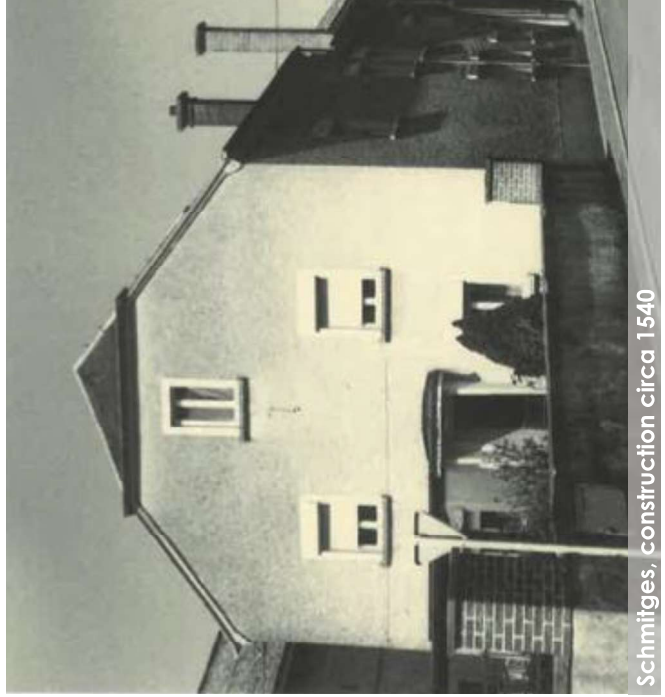
**PHOTOS HISTORIQUES  
WILMES, SCHMITGES, KREMERS**



Wilmes, construction circa 1560



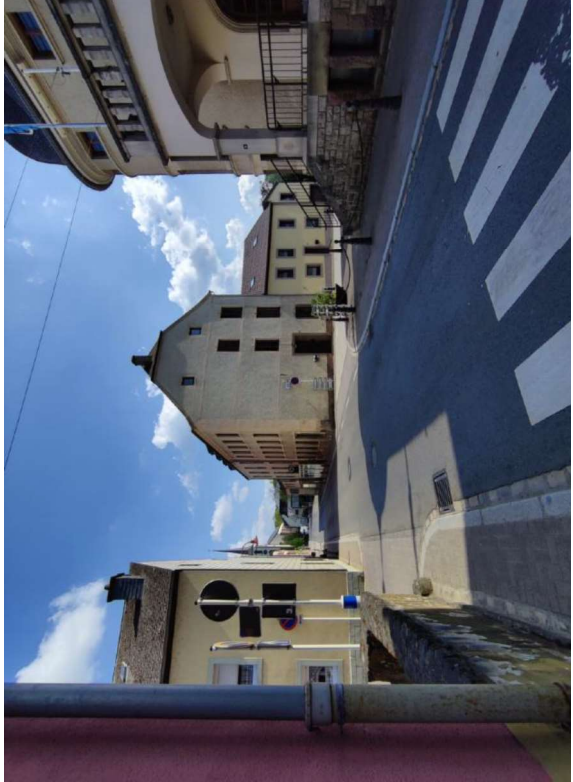
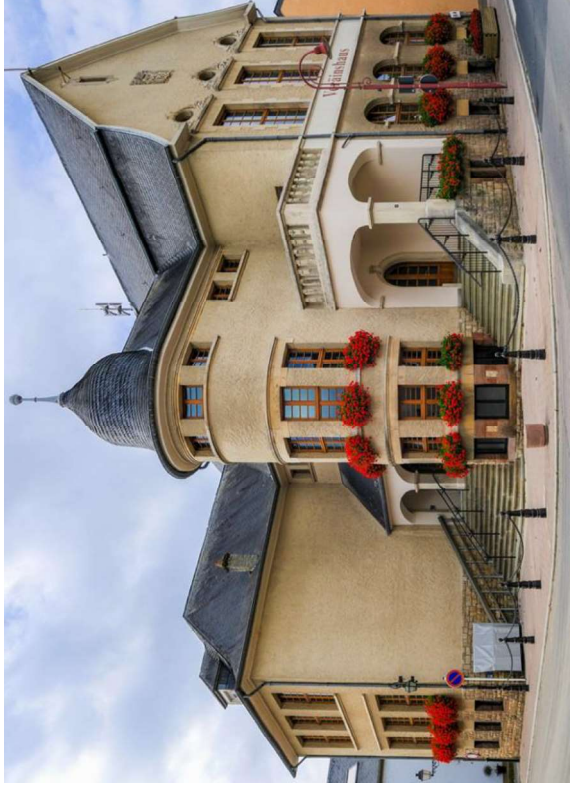
Kremers, construction circa 1610



Schmitges, construction circa 1540

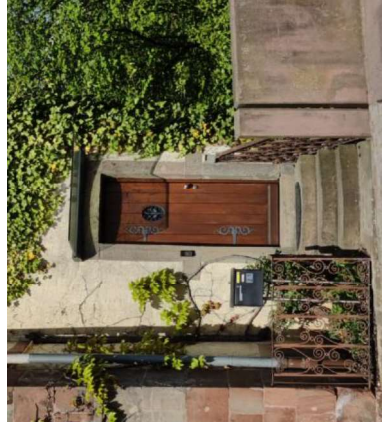
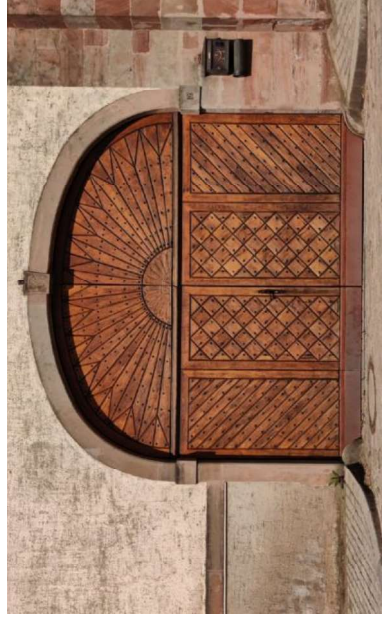
Source :  
Victor Kalmes, Bissen seit eh und je - Band 1

# L'ARTÈRE - LA GRAND-RUE



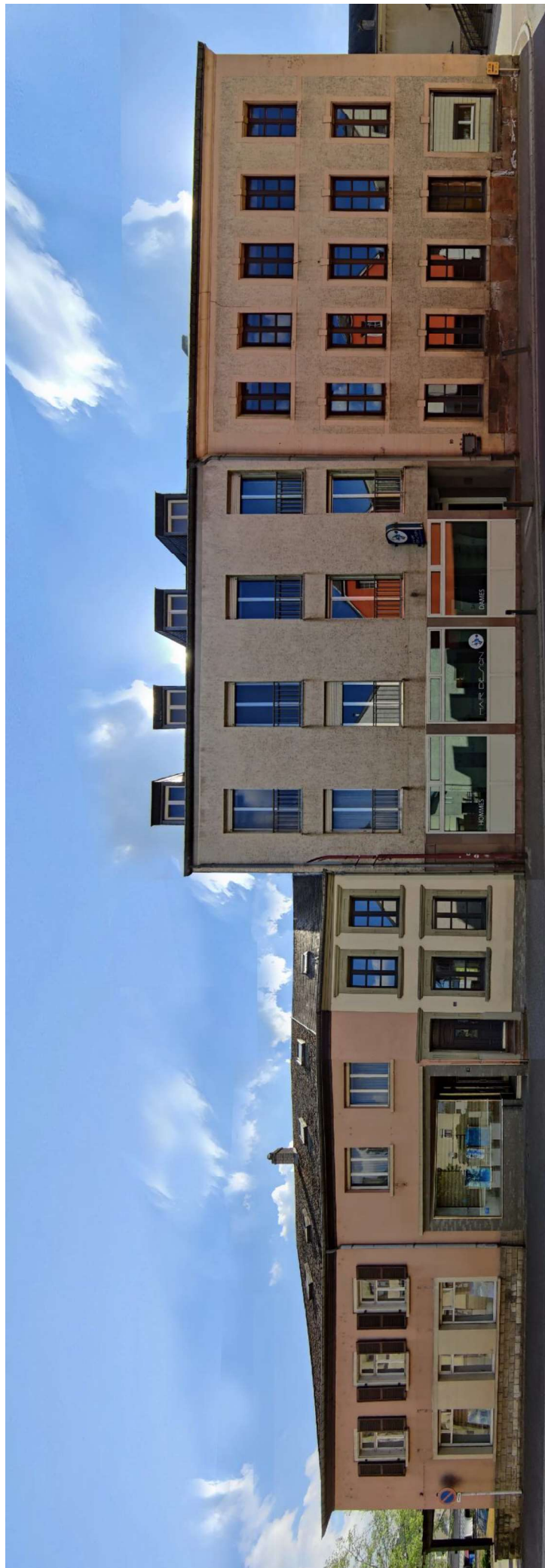


# L'ARTÈRE - LA SINNESCHHAUS



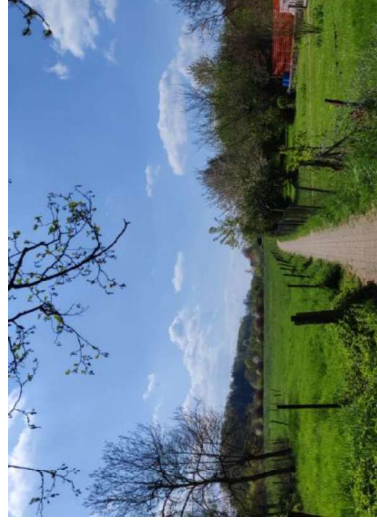
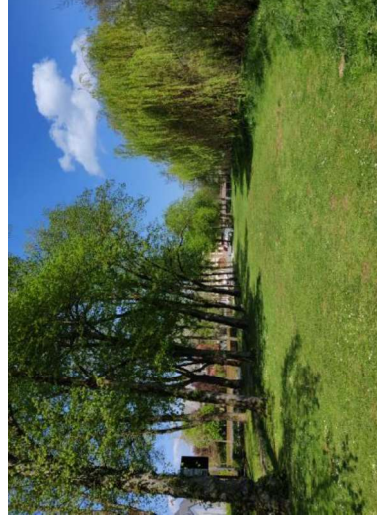
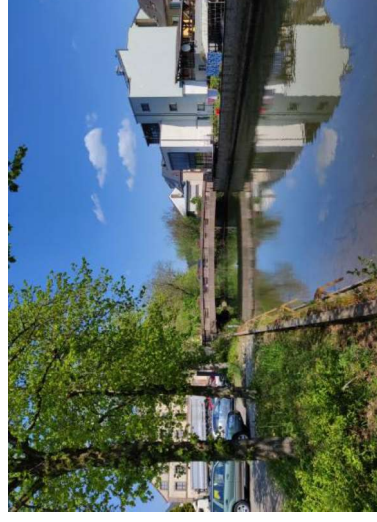
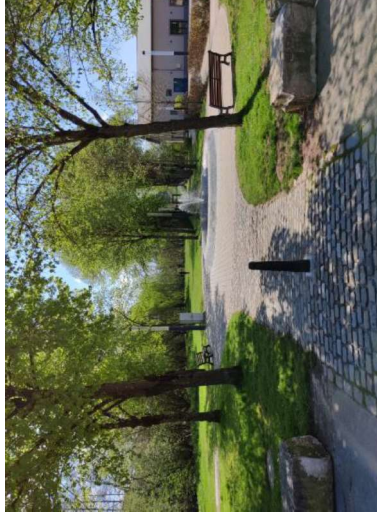


# L'ARTÈRE FAÇADE GRAND-RUE



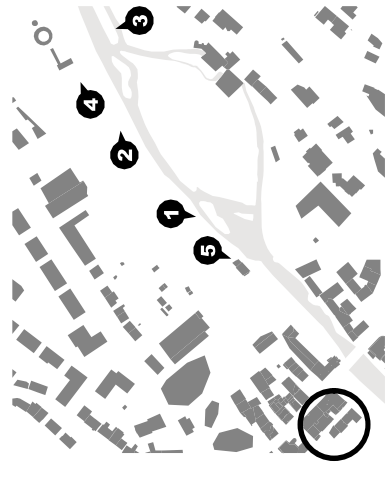
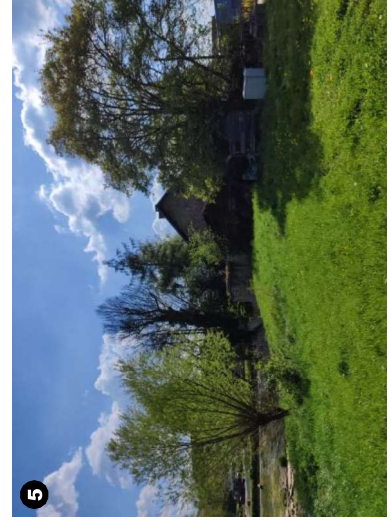
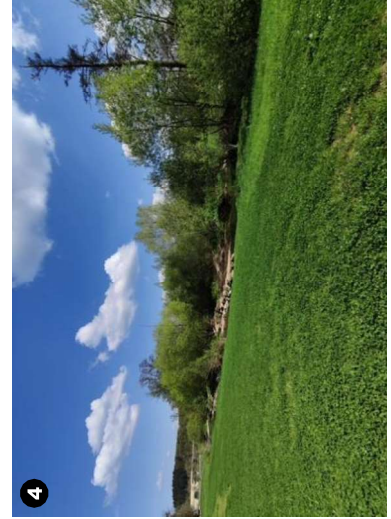
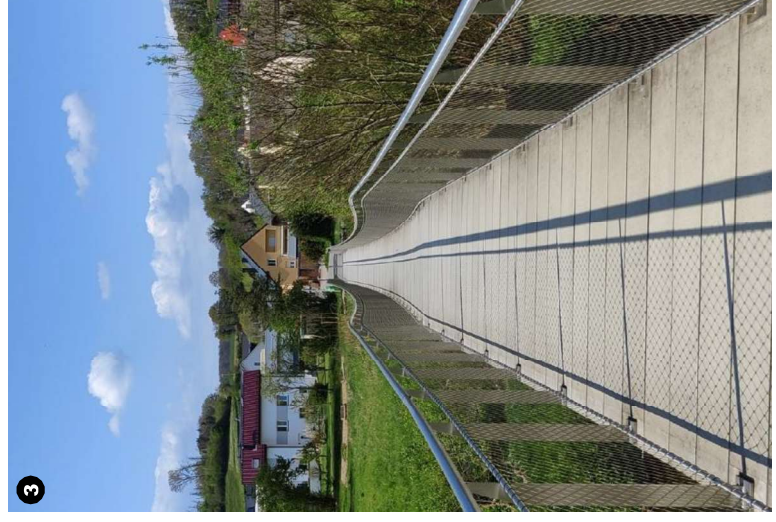
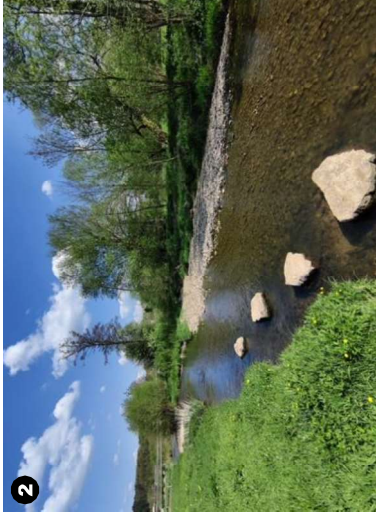


# LA RIVIÈRE - VUES DU SITE





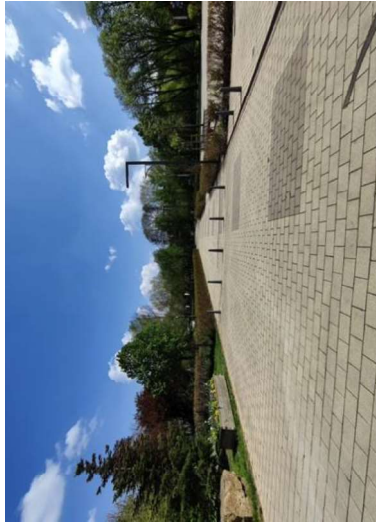
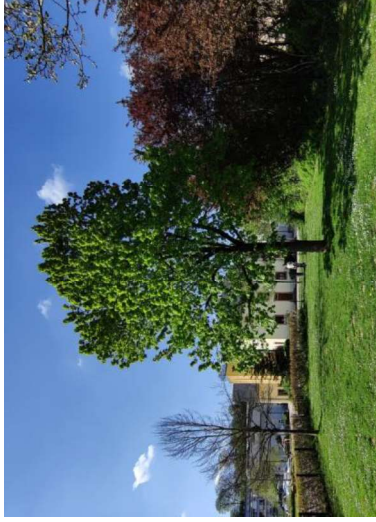
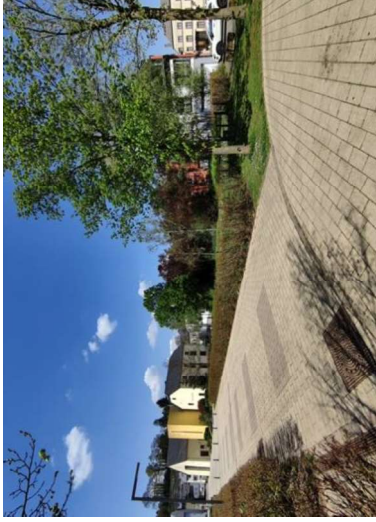
# LA RIVIÈRE - BERGES DE L'ATTERT



Source : photos sur site [2022]

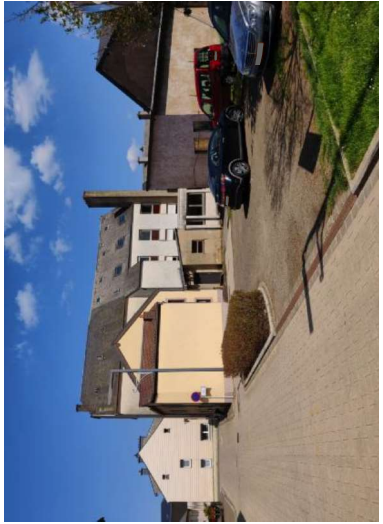
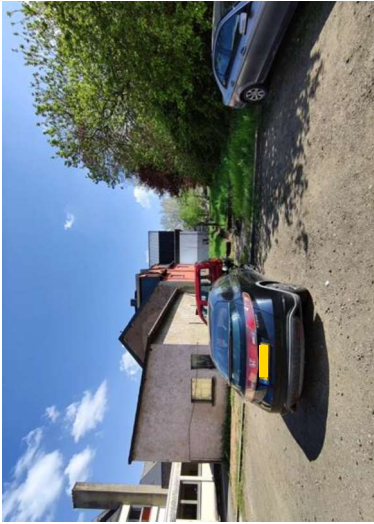


# LA PLACE WONERBATTI, AM FROUNERT



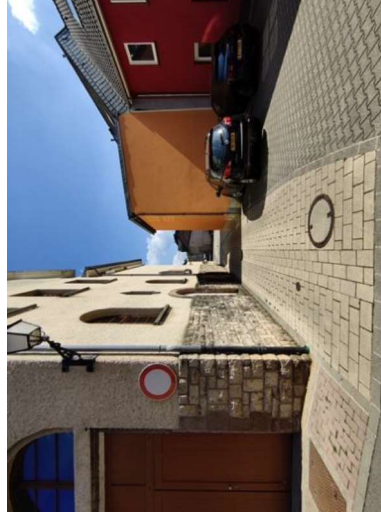
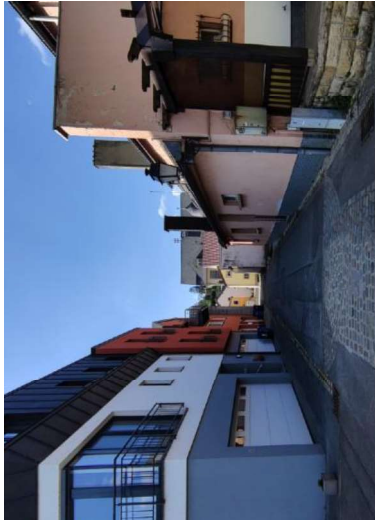
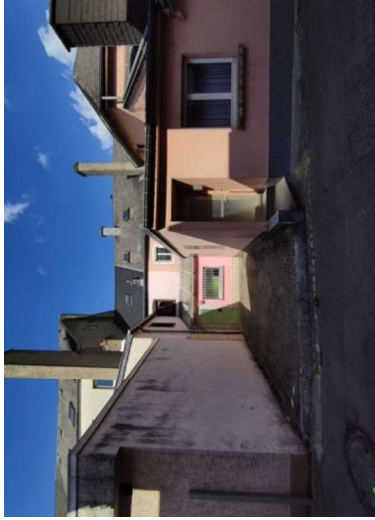


# LE QUARTIER - RUE AM PLACE





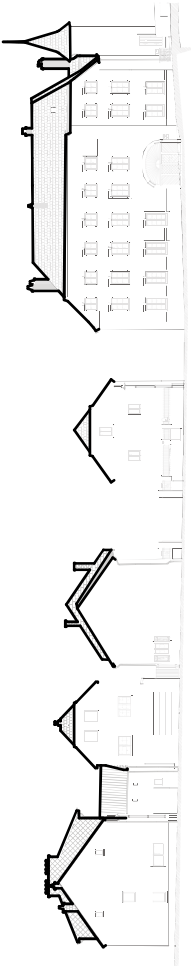
LA VENELLE - RUE DE L'ATTERT



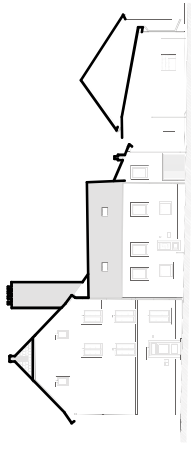
# LE CIEL - PAYSAGE DE TOITURES



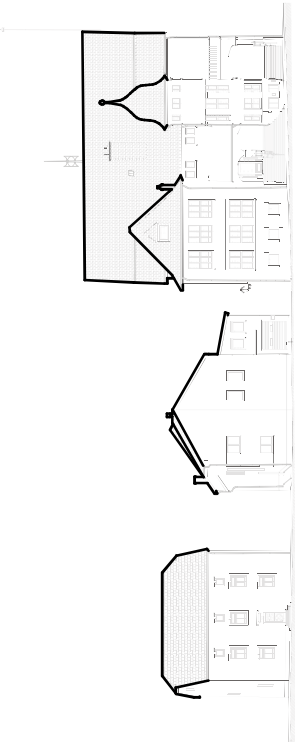
Grand-Rue côté Sud-Ouest



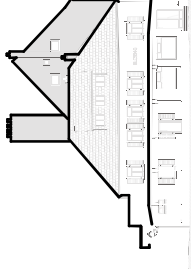
Grand-Rue côté Nord-Est



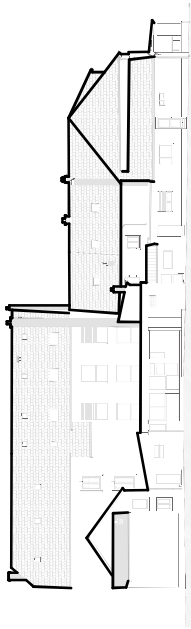
Am Place côté Sud-Est



Am Place côté Nord-Ouest



Façade Rath's Nord-Ouest



Rue de l'Atelier