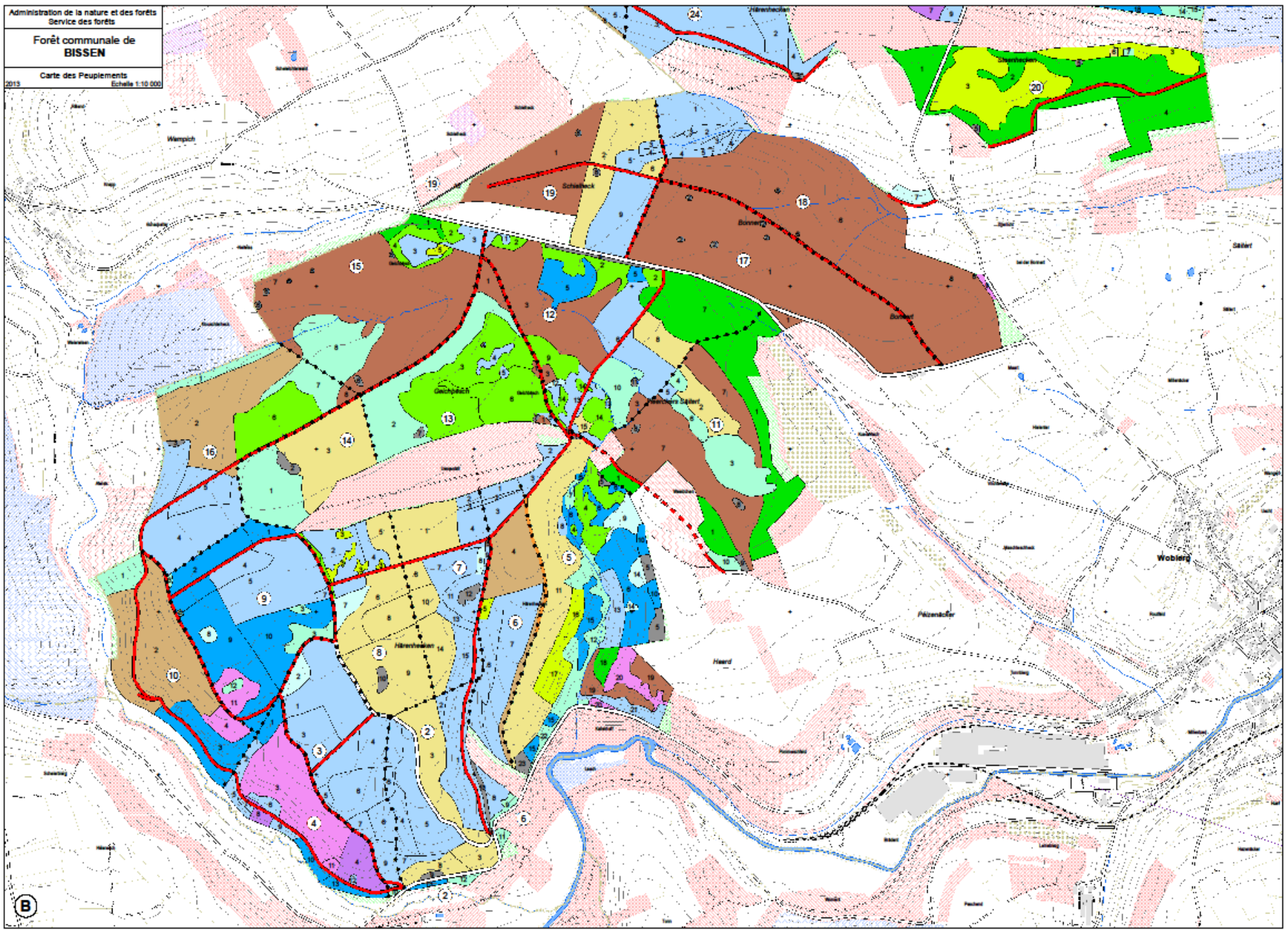


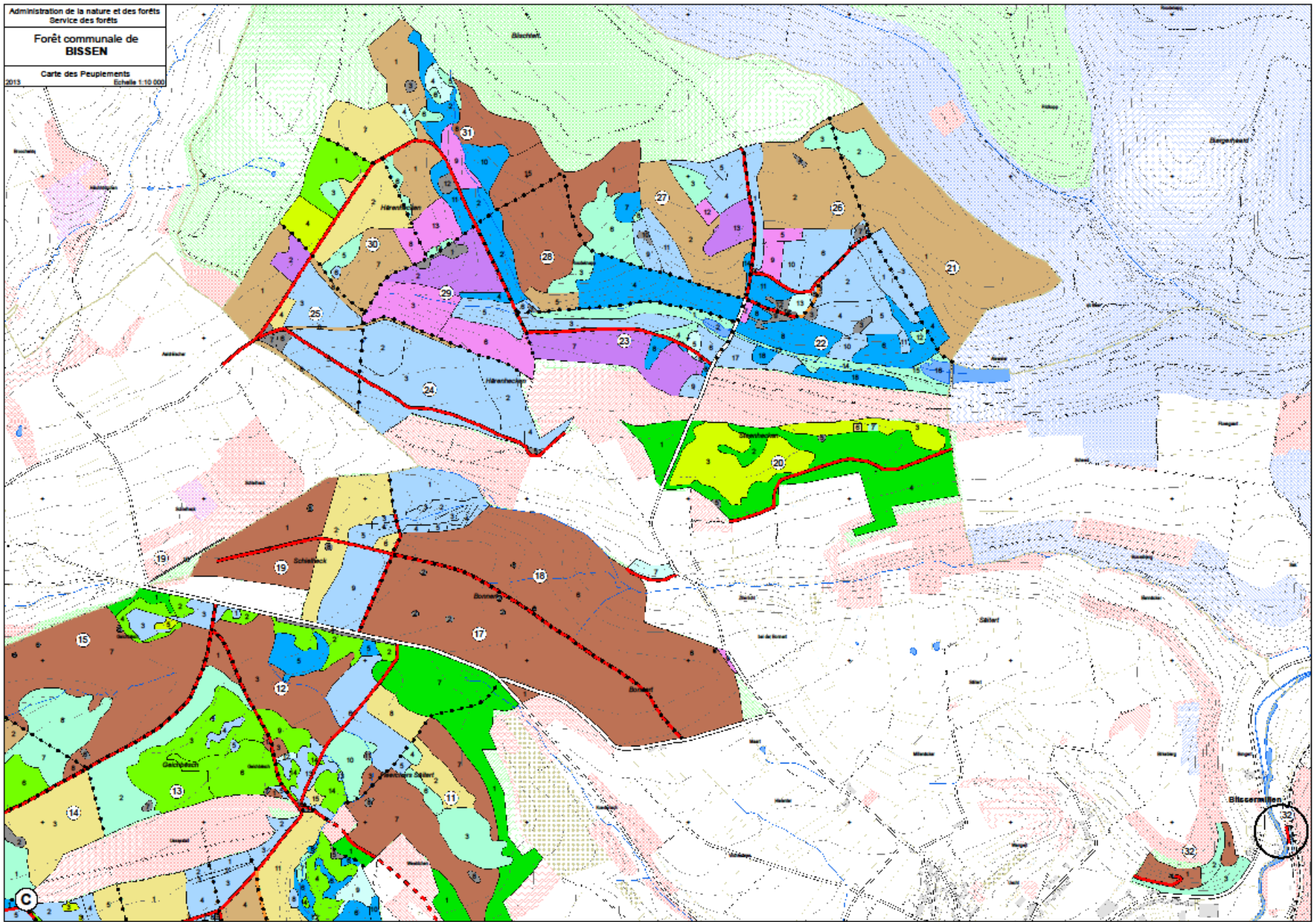
**Gemeng
Biissen**

Eng Gemeng déi verbënnt



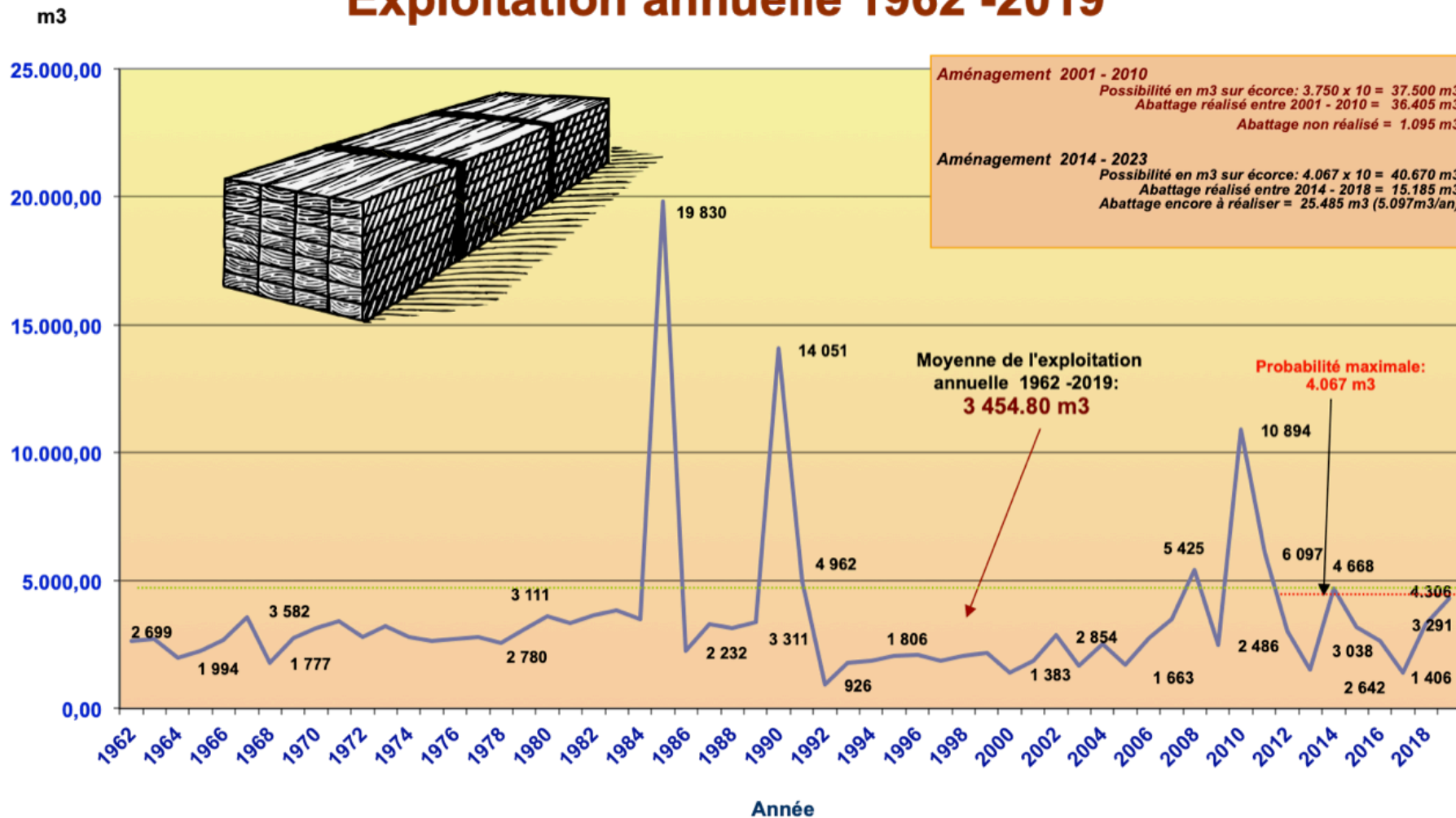
**Forêt communale de
BISSEN**







Exploitation annuelle 1962 -2019



Waldwegebau 2009 - 2020



Jahr	Ort	Parzell	Länge (m)	Kosten (€)	Subside (€)
2009	Staenecker	20	650	28.000	22.400
2010	Schielheck	19	500	30.000	24.000
2011	Michelbucherhecken	24	900	63.250	50.600
2012	Aalwiesen	4 + 10	1.000	70.000	56.000
2013	Fleechers Seitert	11 + 12	1.100	71.750	57.400
2014	Haerenhecken	12	700	62.500	50.000
2015	An der Gaich	15	680	65.000	52.000
2016	Roudeknapp	28	1.050	77.635	62.108
2017	Am Gärtchen	21 + 22	450	44.974	35.979,2
2018	Haard	5	600	57.973	46.378,4
2019	Härenhecken, Dellebiereg	5 + 6	800	77.162	61.729,2
2020	Härenhecken	5	1.000	77.220	61.776,0
Total:			9.430	725.464	580.371,2

Weg (lfm) : 9.430

Weg pro Hektar (lfm/ha) : 17,15

Kosten insgesamt Wegebau (€) : 725.464

Staatliche Zulage (80%) (€) : 580.371,2

Gesamtinvestition Gemeinde Bissen (€) : 145.093€

Gesamtinvestition Gemeinde Bissen pro Jahr (€/Jahr) : 12.091€

Gesamtinvestition Gemeinde Bissen pro Jahr pro Hektar (€/Jahr/Hektar) : 21,98€



**BISSEN
TRAIL**



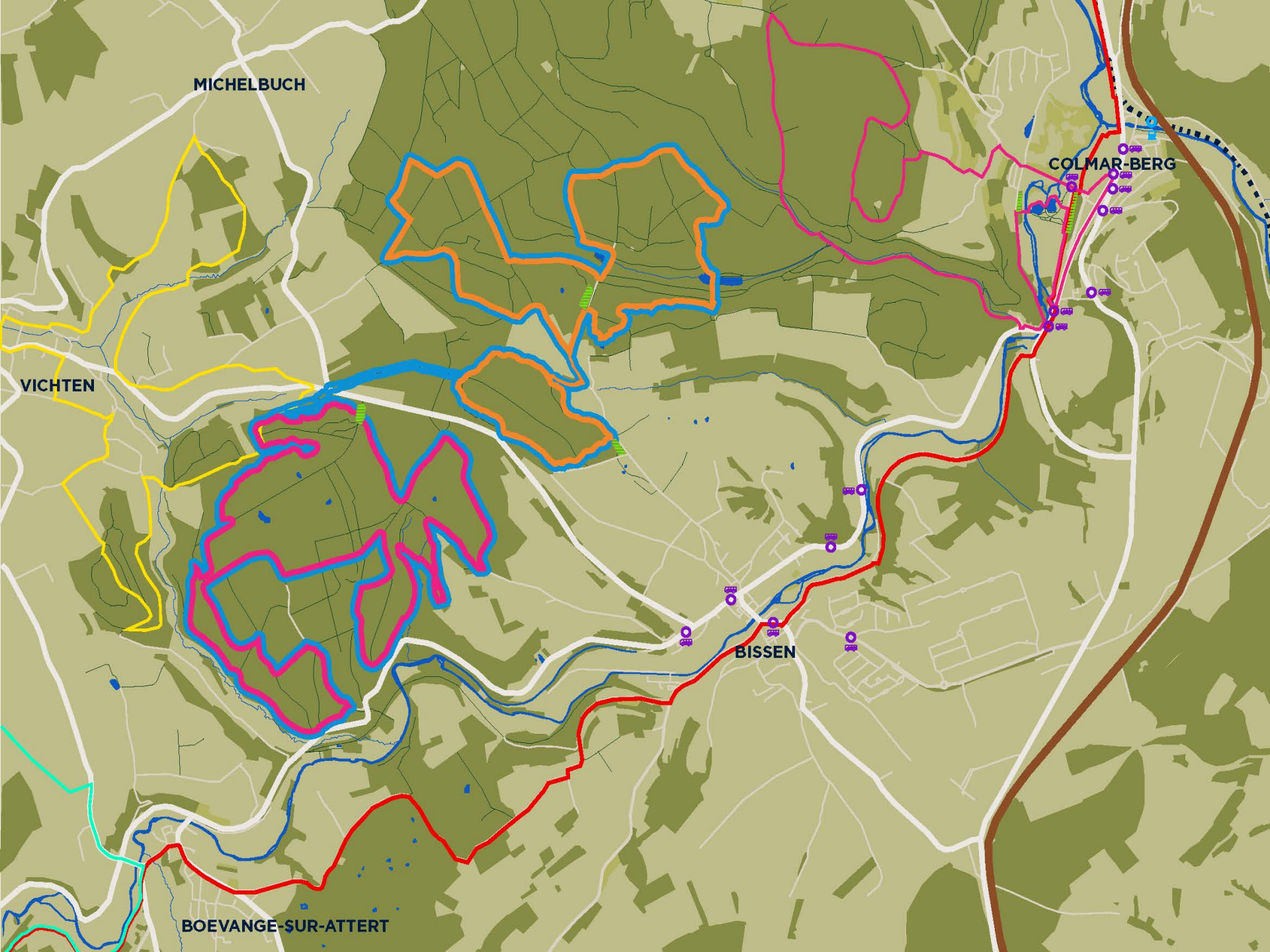
BISENTRAIL 1



BISENTRAIL 2



BISENTRAIL 3.0



MICHELBUCH

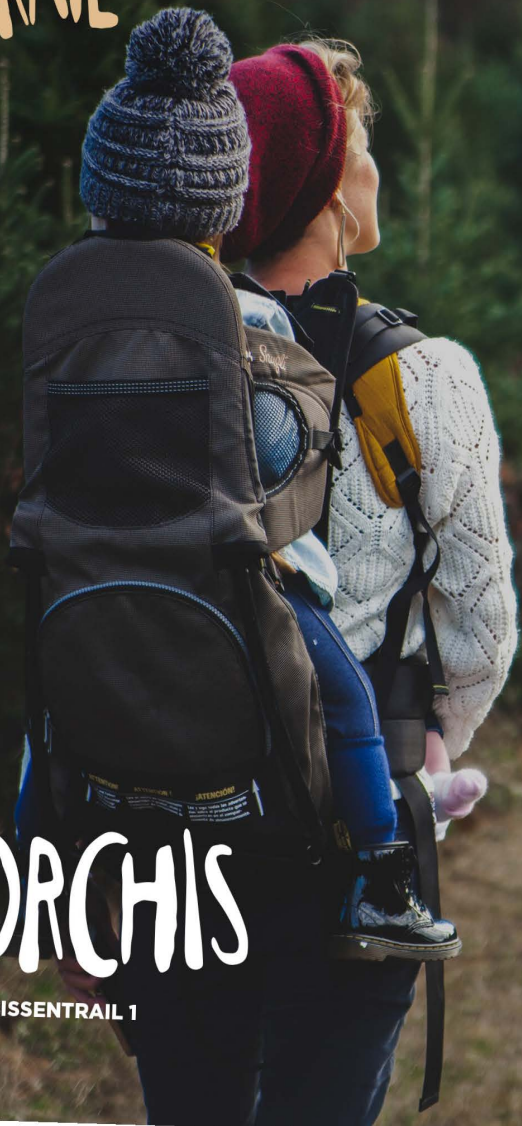
VICTEN

BOEVANGE-SUR-ATTERT

BISSEN

COLMAR-BERG

BISSEN TRAIL



BISSENTRAIL 1



Distance
12,50 KM

Dénivelé
321 M

Durée moy.
52 MIN.

BISSEN
TRAIL



BISSENTRAIL 2

Distance
12,80 KM

Dénivelé
377 M

Durée moy.
47 MIN.

BISSEN TRAIL

**LUPUS**

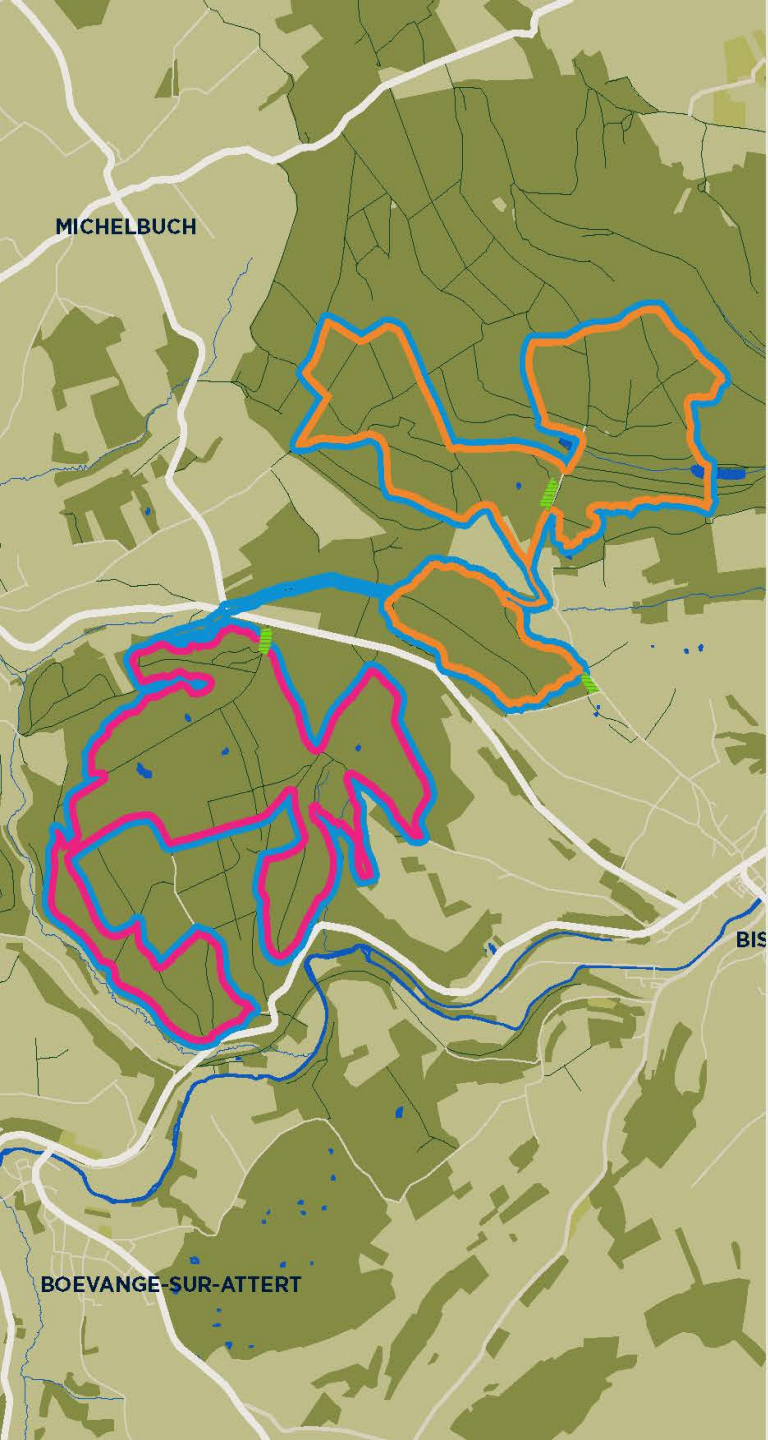
BISSENTRAIL 3.0



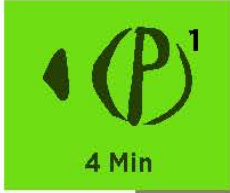
Distance
27,15 KM

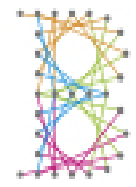
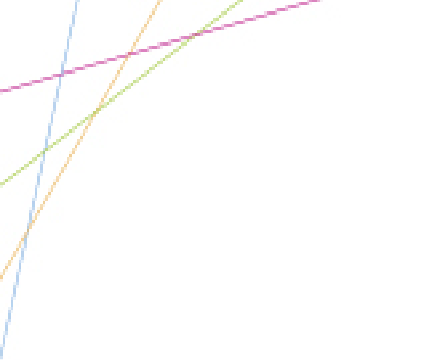
Dénivelé
377 M

Durée moy.
120 MIN.











Merci fir d'Nolauschteren.